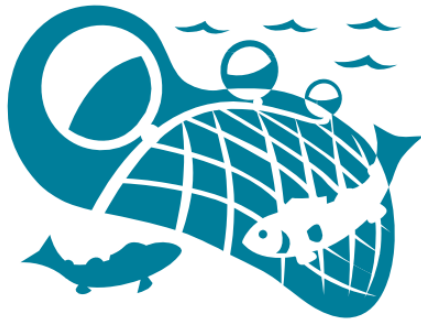


Village of Tilghman Master Plan



Working Waterfront Enhancement Grant

Maryland Working Waterfront Commission



Final Report

December 1, 2008

MARYLAND'S WORKING WATERFRONTS ENHANCEMENT GRANT

FFY2017 REQUEST FOR PROPOSALS



Working Waterfronts Enhancement Grant Summary

The Maryland Department of Natural Resources' Working Waterfronts Program provides financial and technical assistance to local governments to promote and assist with the preservation of existing and historic working waterfronts in Maryland. The Working Waterfronts Program is soliciting proposals from local governments for a unique grant to support revitalization of working waterfront communities and economies throughout Maryland. Local governments are welcome to apply for financial assistance to complete one-year projects focused on planning or implementation.

Ideal project proposals will target: Development of new, or modifying existing waterfront and comprehensive plans, maritime zoning, codes, ordinances, visioning workshops, as well as programs and tools dedicated to working waterfront protection and enhancement.

Applicants are encouraged to address multiple program priorities including: traditional uses, public access, maritime heritage, tourism and business, recreation, and natural resources conservation and/or restoration, while taking into account potential flooding and storm surge impacts.

Who is Eligible?

Municipalities and counties in the coastal zone are eligible to apply for and receive funds on an annual basis. Maryland's coastal zone includes the following counties and the municipalities located within: Worcester, Somerset, Wicomico, Dorchester, Talbot, Caroline, Queen Anne's, Kent, Cecil, Harford, Baltimore, Baltimore City, Anne Arundel, Prince George's, Calvert, Charles and St. Mary's.

WHAT?

Funding for a one year project to support revitalization of working waterfront communities and economies through planning or implementation

HOW MUCH?

Total request may not exceed \$60,000.
No matching funds are required

WHEN?

Application Deadline: June 17, 2016

HOW?

Submit proposals online through CCS's grants management service, at:
<http://mesgis.com/GrantsOnline/>

CONTACT

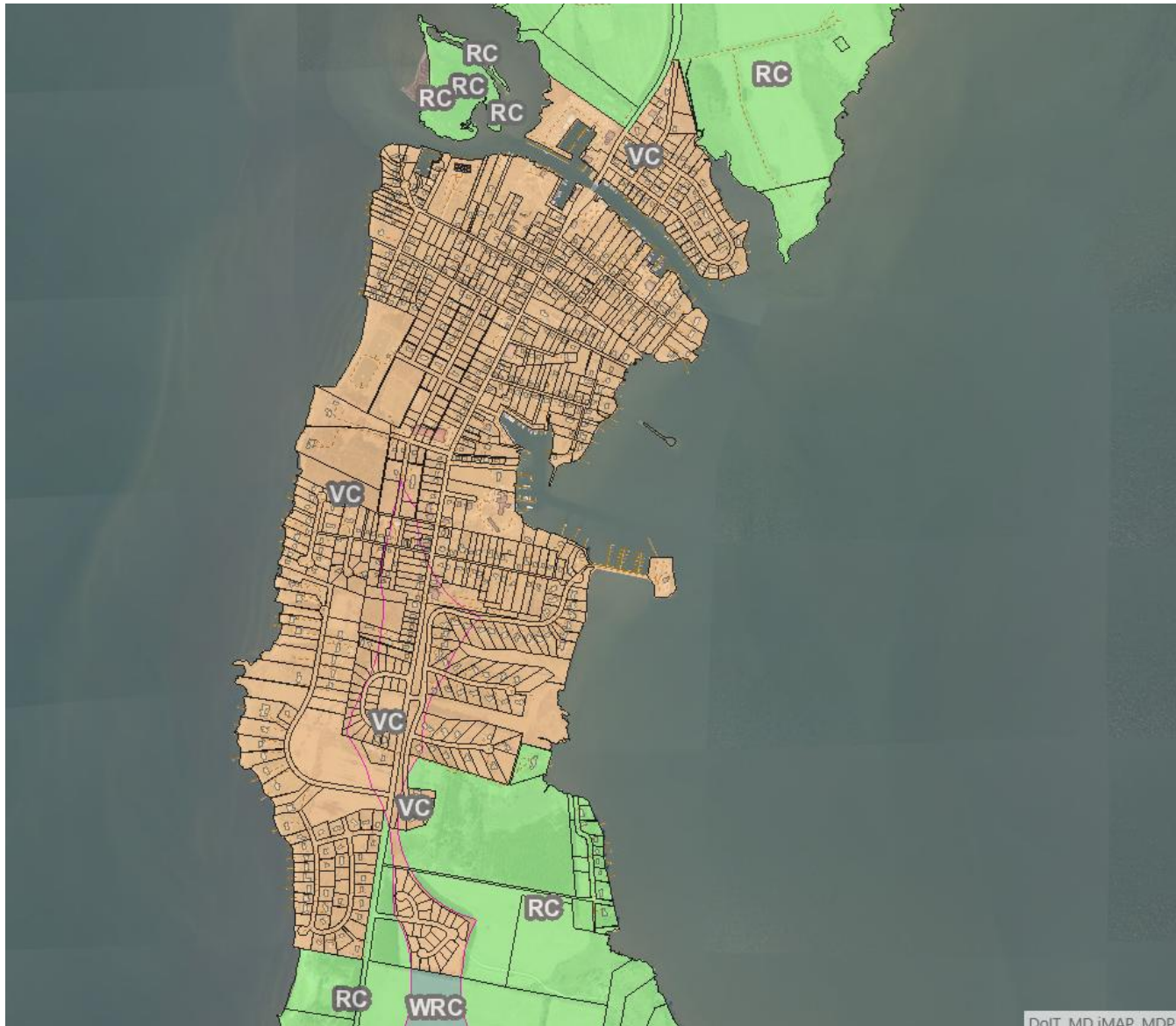
Kelly Collins
Maryland Department of Natural Resources
Chesapeake & Coastal Service
kelly.collins@maryland.gov
410.260.8912



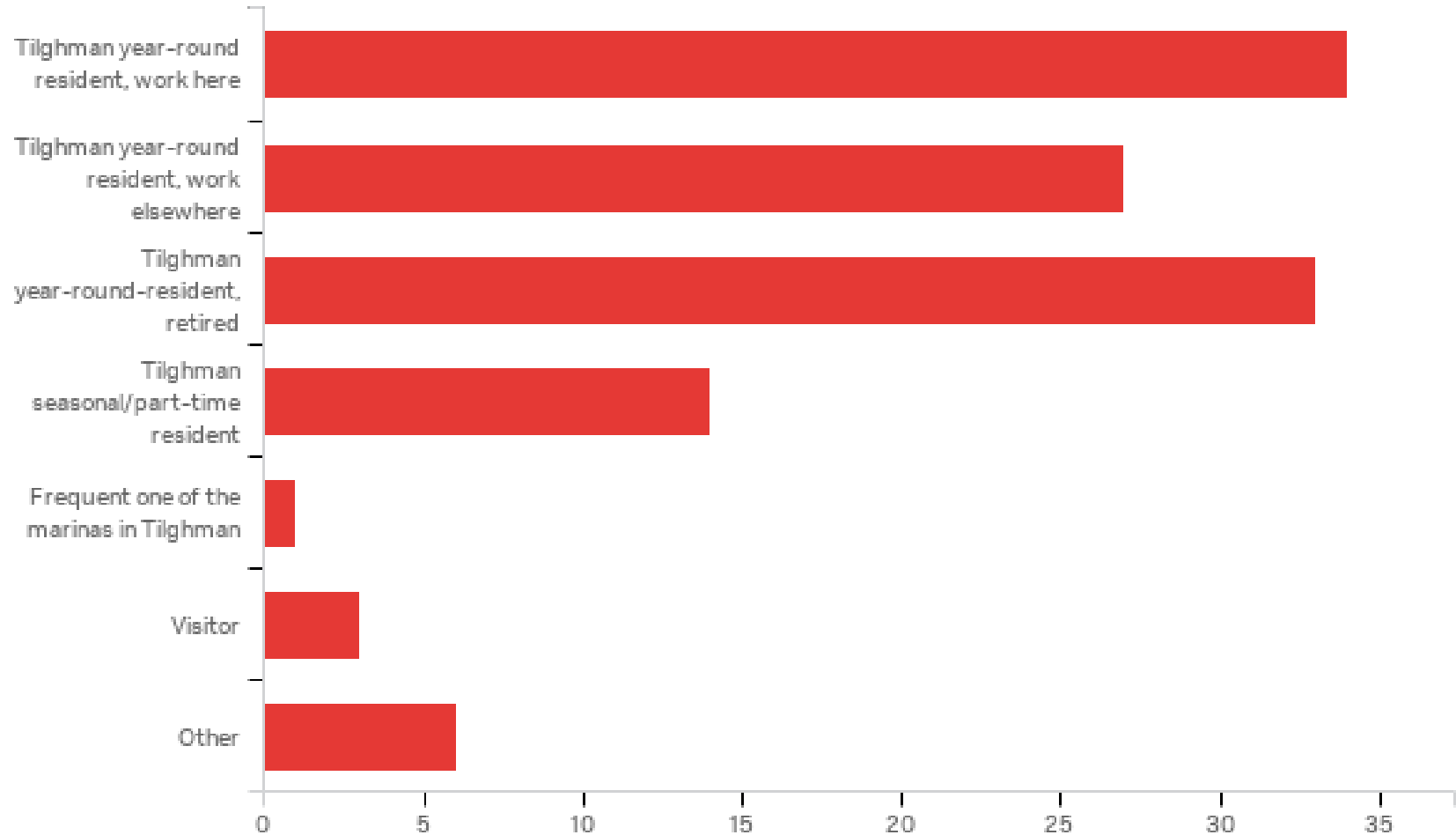
Chesapeake
Coastal Service



Maryland Working Waterfront Program

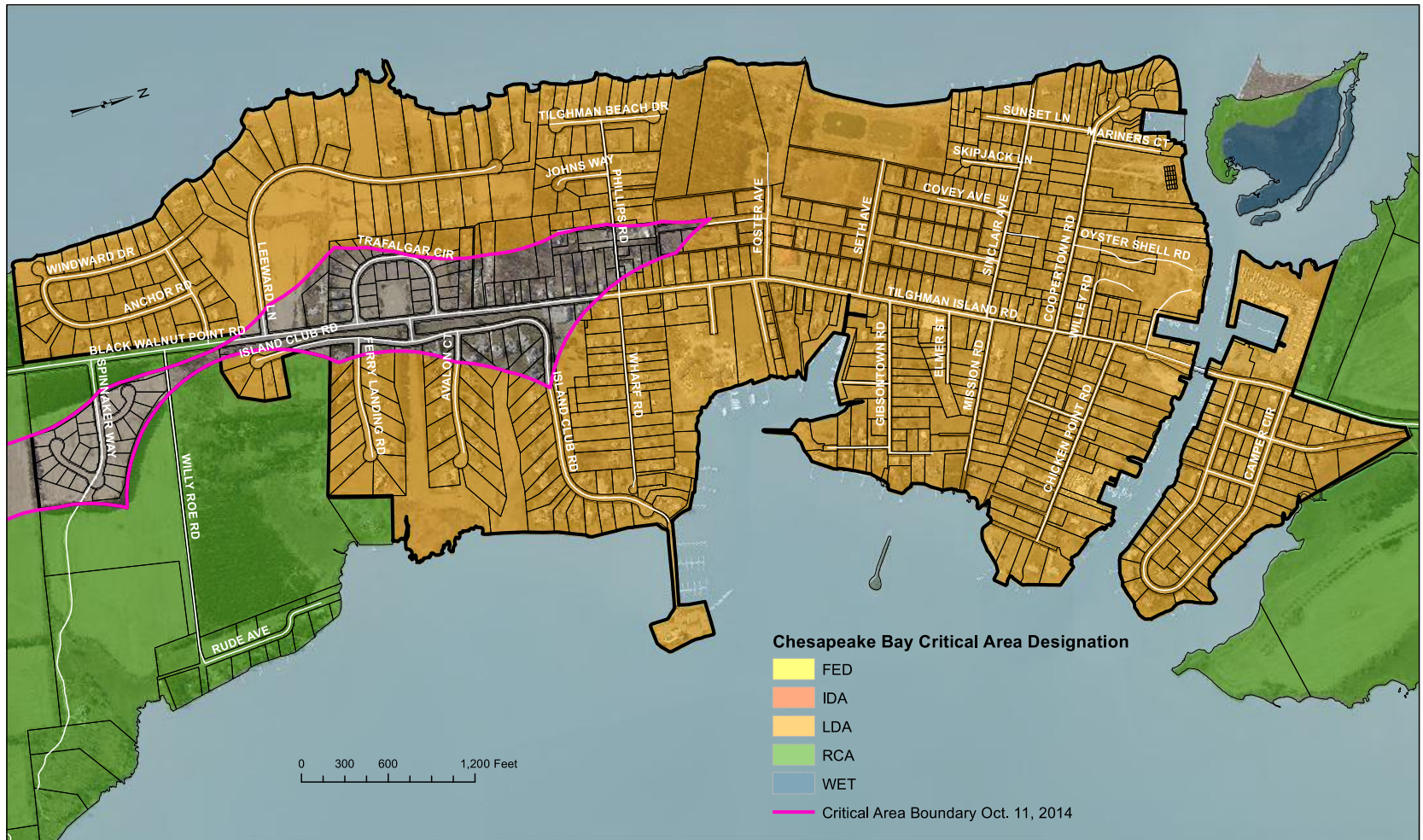


Tilghman Community Survey

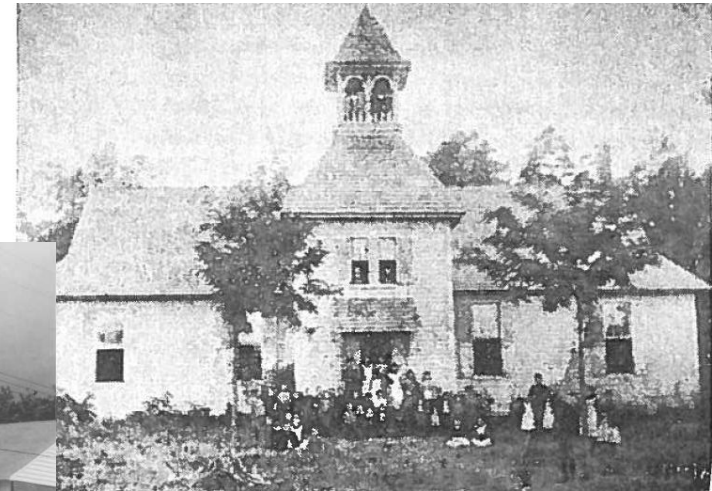


Critical Area Map

Chesapeake Bay Critical Area: Effective Oct 11, 2014

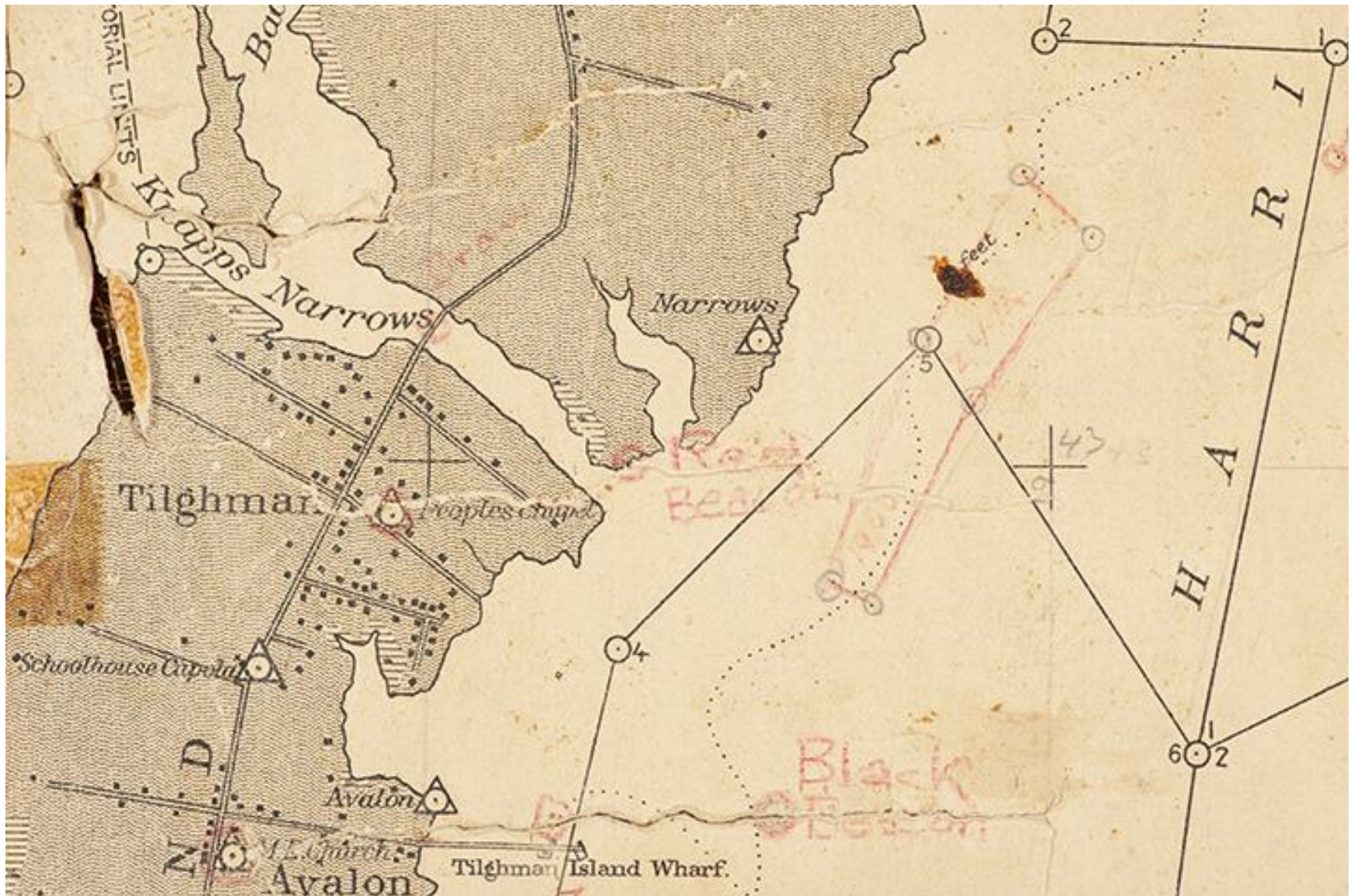


Context for the Village Master Plan



Tilghman Historic Context

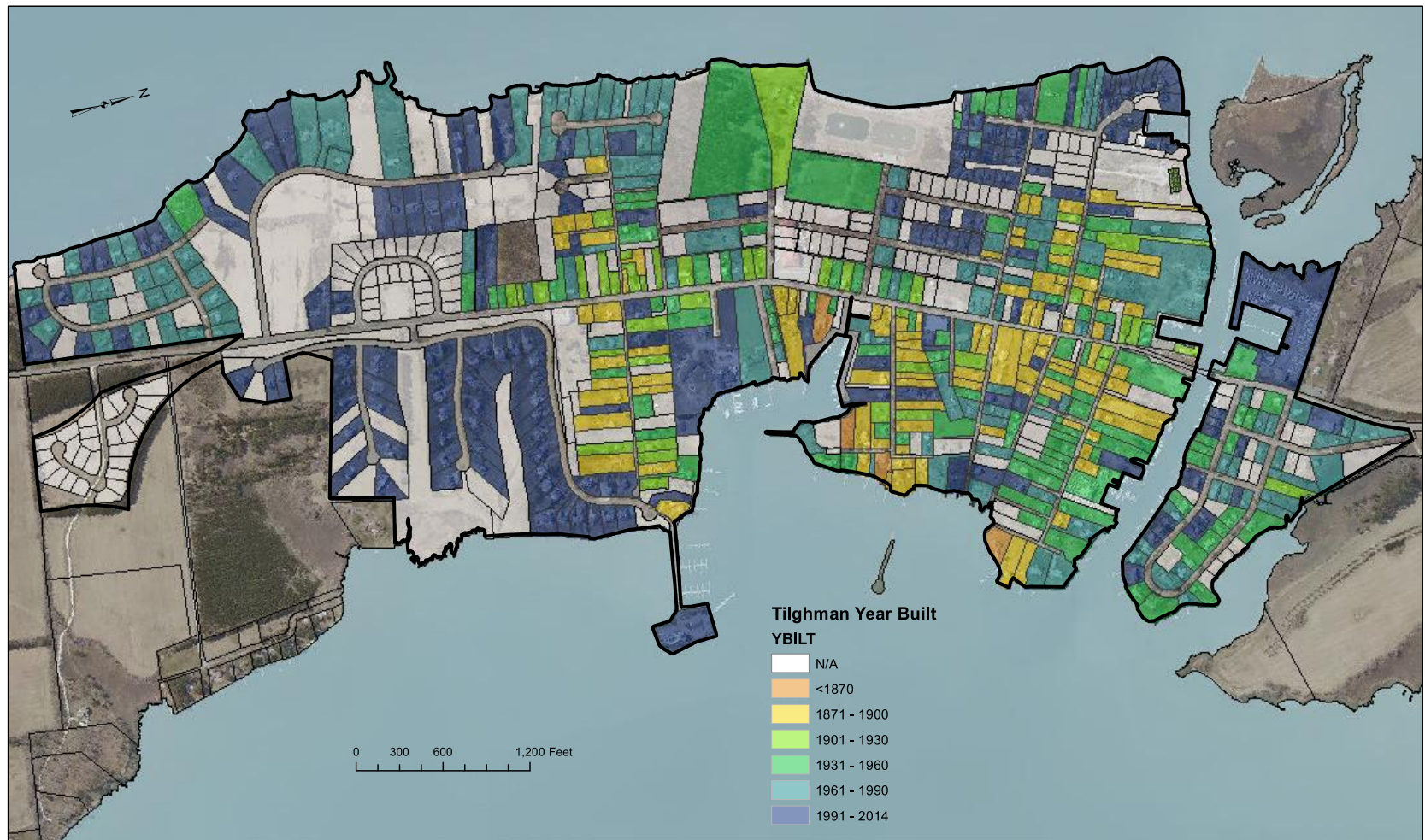
1910 Oyster Bed Map



1977 Aerial Map of Tilghman



Rural Village of Tilghman
Year Built



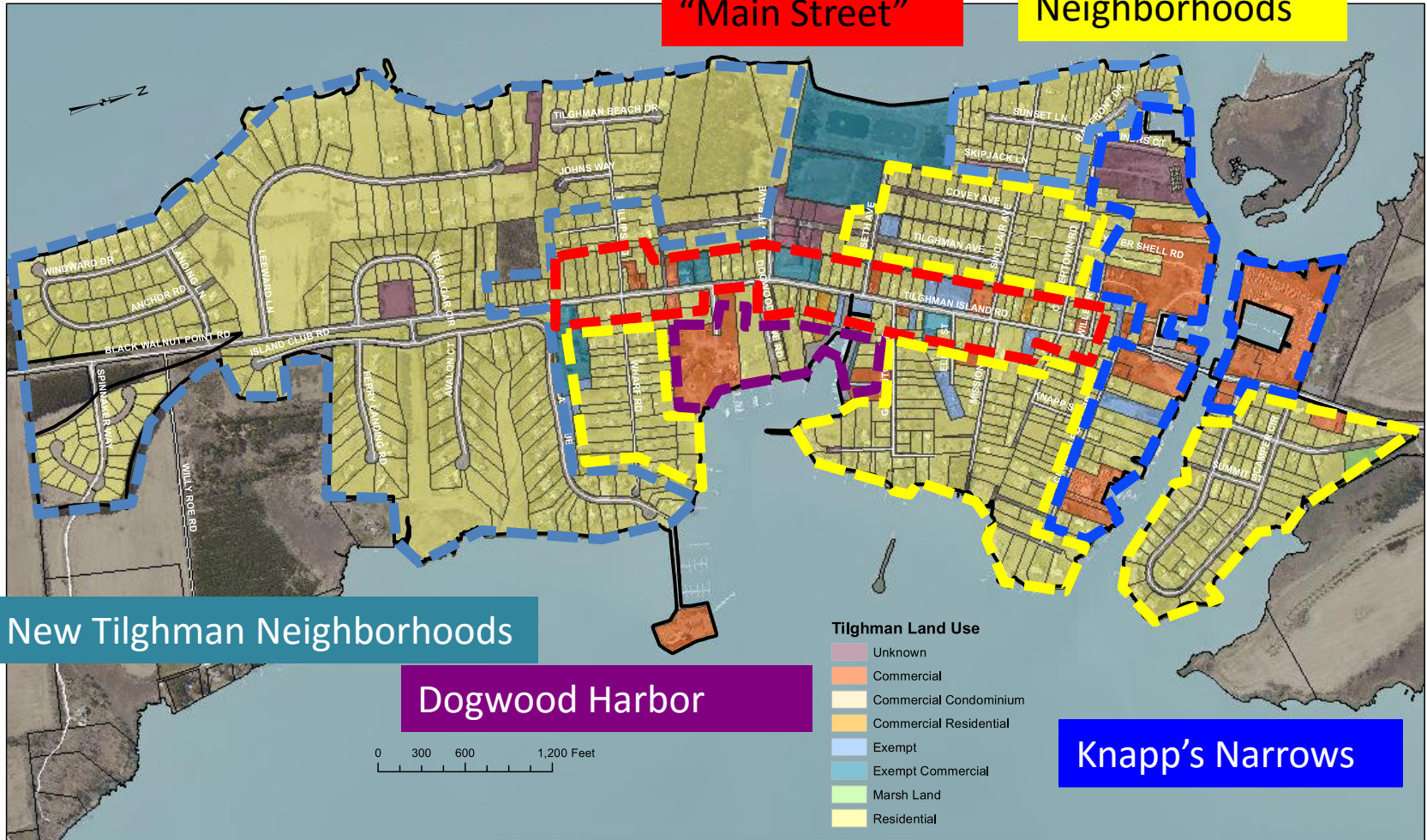


Context for the Village Master Plan

Historic Village of Tilghman
Land Use

Historic Tilghman
Neighborhoods

"Main Street"



Context for the Village Master Plan



- Need for business and community support of watermen way of life
- Availability and capacity of working space in existing marinas
- Dredging Dogwood and Tongers is necessary for watermen -
- Enhance commercial seafood/boatyard and other water-related businesses opportunities
- Public access to water in general and competition among recreation, residential/tourism, and available space for working watermen



- Business opportunities and challenges (limited market, lack of business friendly regulations)
- Business signage/finding businesses
- Getting around on a bicycle or on foot is a challenge
- Stormwater issues and ditches; flooding
- Parking limited by Critical areas requirements, street space
- Speeding

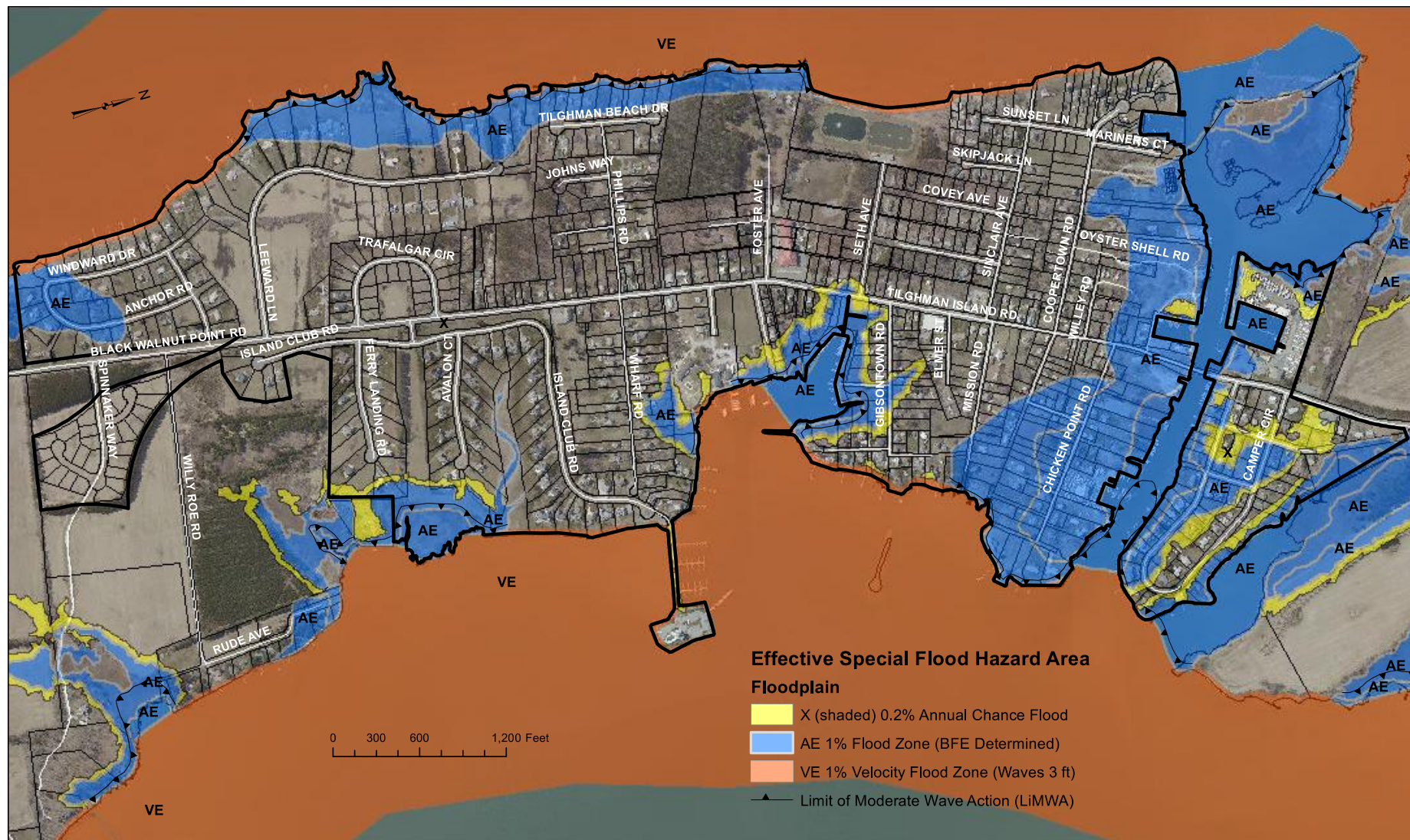


- Preserve neighborhood character; maintain housing stock
- Affordable housing needed
- How to build on vacant lots; challenge of building codes
- Housing opportunities
- Concern about condominiums
- County repair of side roads



- Concern about scale, compatibility and affordability
- Attracts different social and economic demographic with different needs, wants, and values

Rural Village of Tilghman
Effective FEMA Floodplains: Effective date July 2016





- Community use of school
- Concerns over level of drug use
- Lack of jobs and opportunities for youth

Village of Tilghman



What to Keep?

1. _____

2. _____

Village of Tilghman



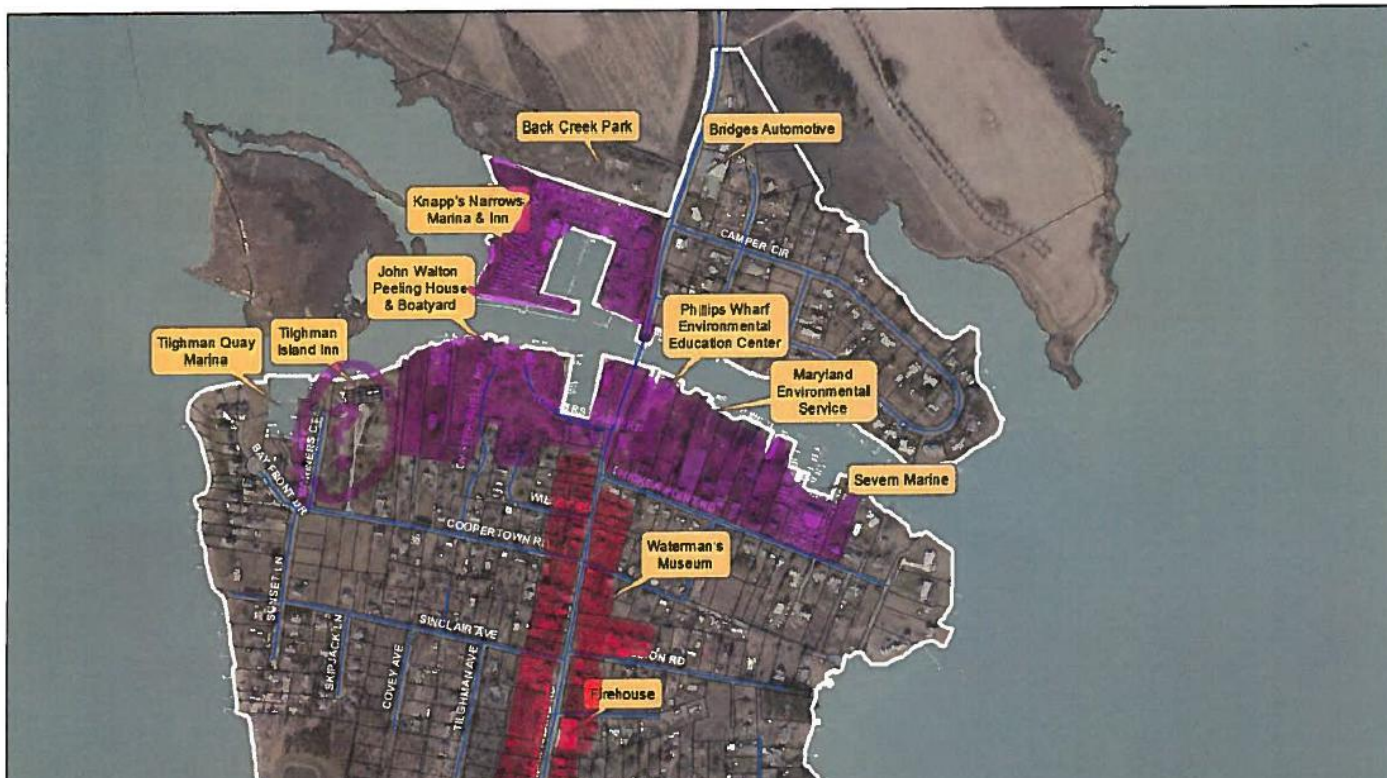
What to Change?

1. _____

2. _____

- PREFERRED AREAS MARINE COMMERCIAL
- PREFERRED AREAS RETAIL/SERVICE COMMERCIAL

Village of Tilghman



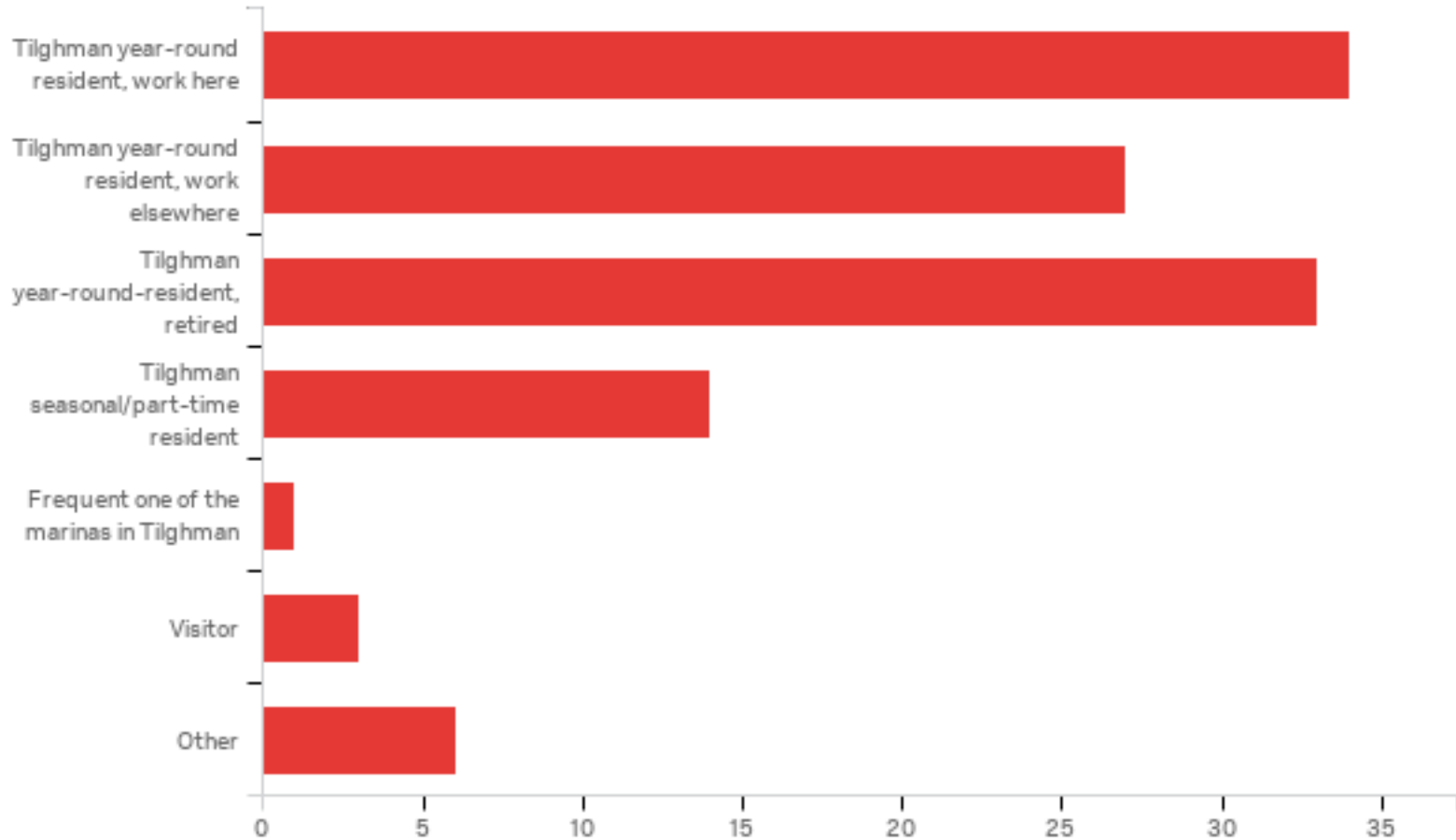
“Working Waterfront” Marine Commercial Uses

- Boatyard
- Marina
- Marine Contracting
- Packing Houses
- Seafood Processing
- Environmental Education
- Canoe/Kayak/Boat Rentals
- Shellfish Hatchery
- Charter Fishing Businesses

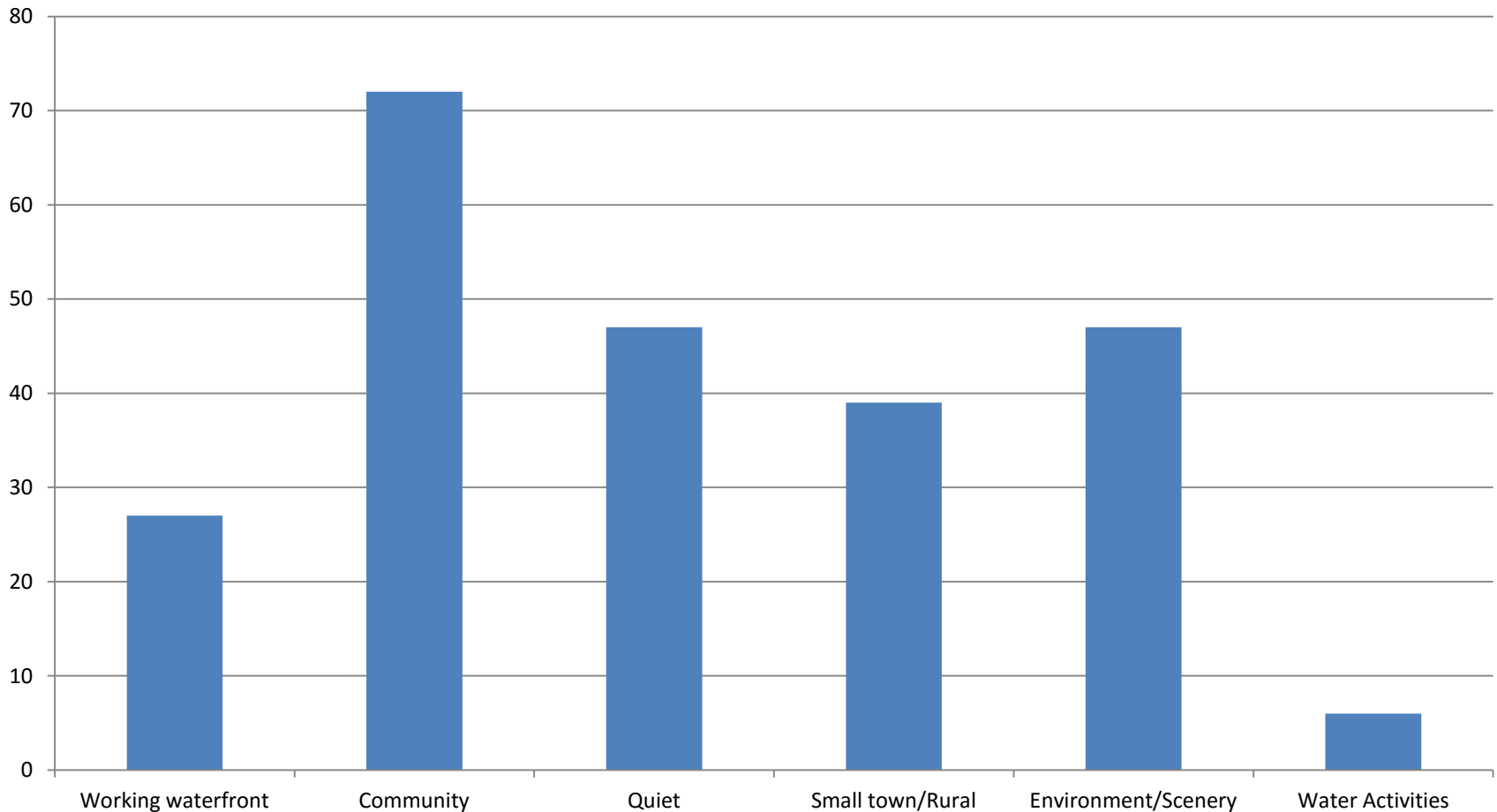
Retail/Service Commercial

- General Store
- Pharmacy
- Bank
- Boutique Shops
- Art Gallery
- Gas Station
- Electrician/HVAC/Plumbing
- Sandwich Shop
- Restaurant
- Automotive Repair
- Doctor's Office

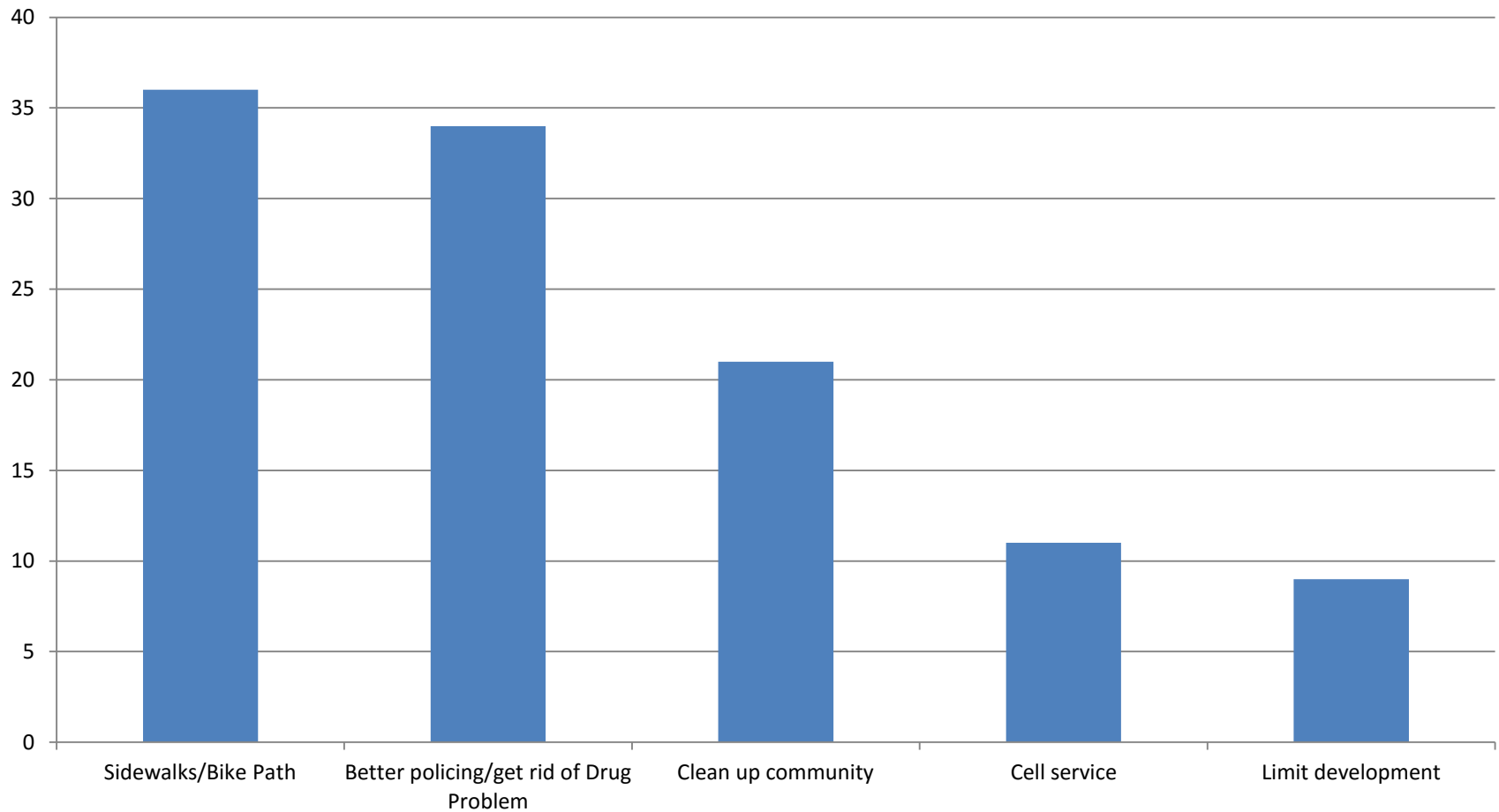
Tilghman Community Survey Respondents



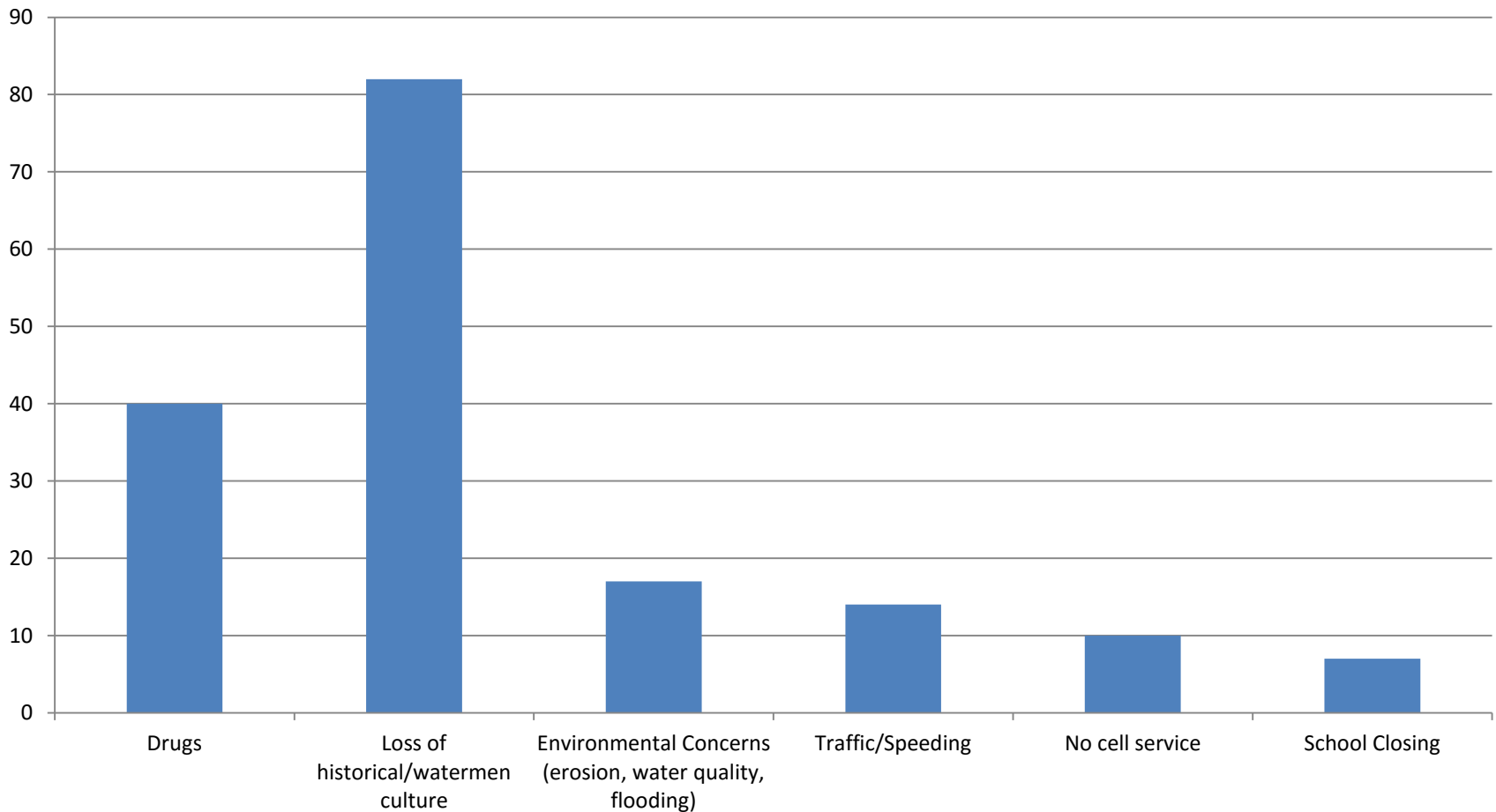
The most important things you enjoy about living in Tilghman



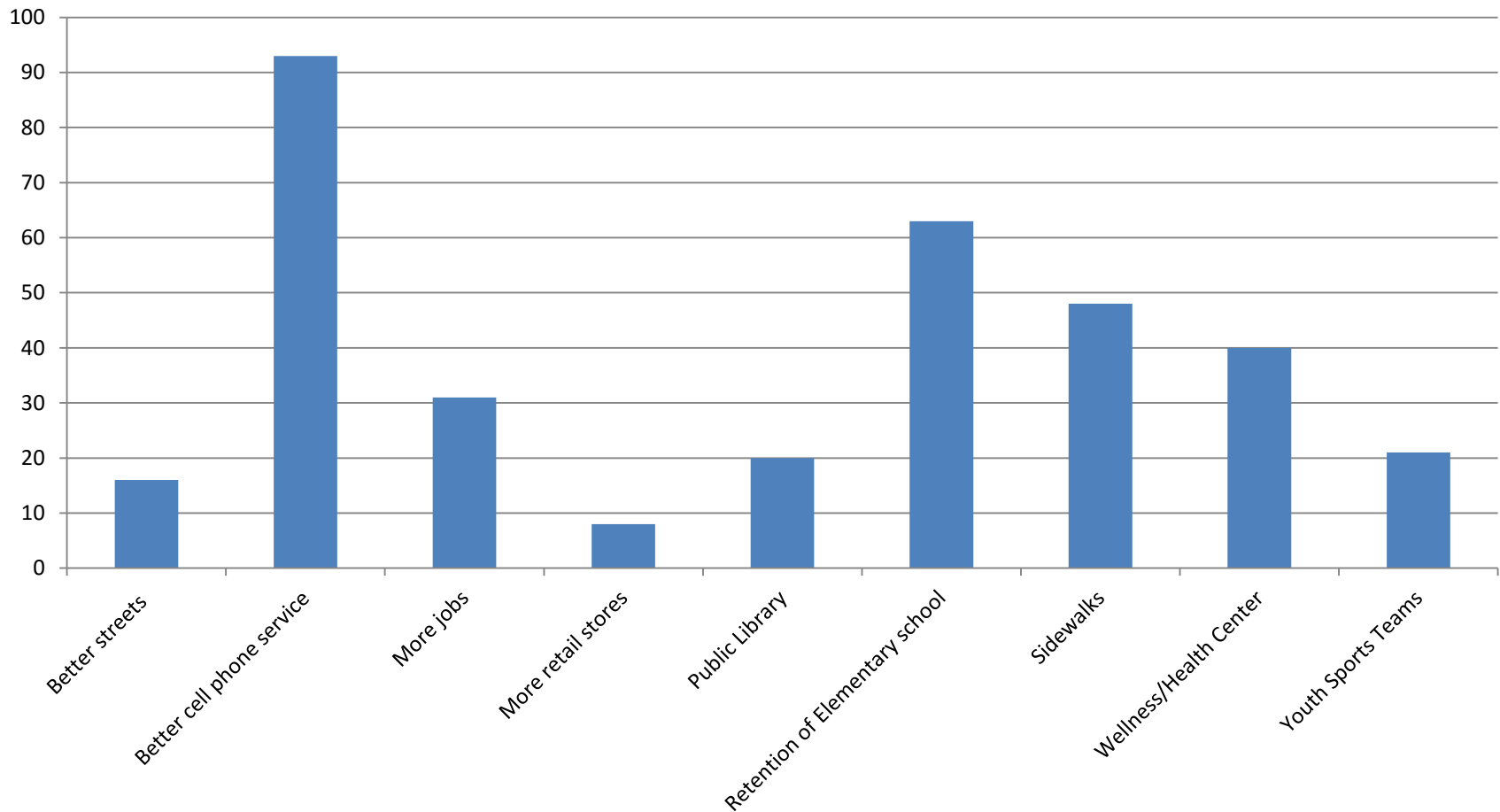
Things you would like to see to make the Village of Tilghman a better community



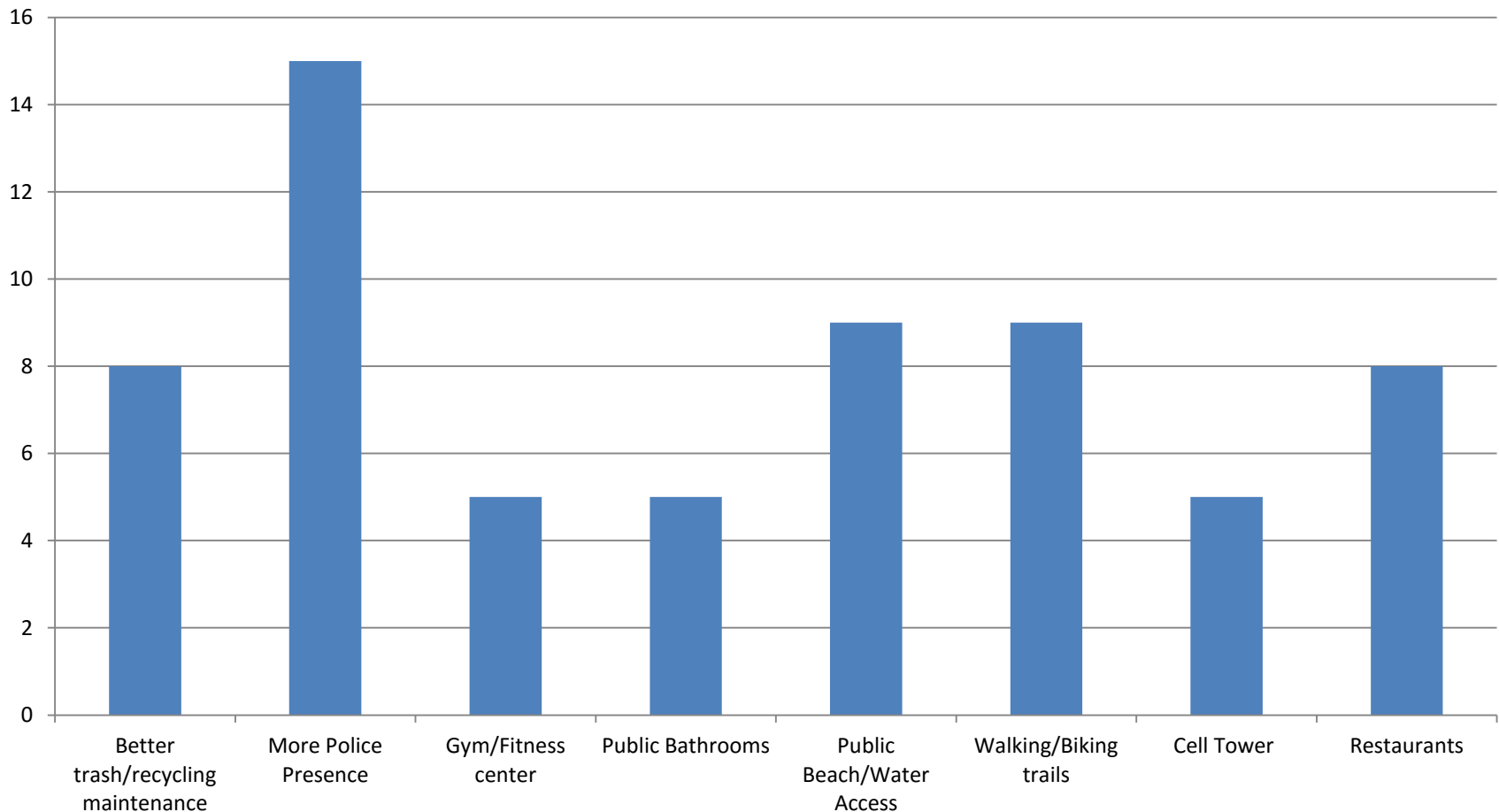
The greatest threats to your quality of life in Tilghman



Specific improvements that would enhance your quality of life



Additional improvements that would enhance your quality of life



Additional Improvements to County-maintained Parks & Landings

